



Choosing the right HP workstation

Overview

- Find the workstation that fits your needs
- Get the most out of your add-on budget
- Compare workstation features to plan ahead



HP's family of personal workstations

Workstations have a variety of characteristics that can give an organization a competitive advantage, increase business productivity, and allow users to work with confidence and peace of mind. HP offers a full range of workstations that are exclusively designed and engineered to give customers a professional edge, and feature:

System Reliability—Features such as error checking and correcting (ECC) memory and more sophisticated cooling mechanisms help ensure expandability while maintaining high reliability.

ISV Application Certification—ISV certification means application and workstation combinations have been thoroughly tested together, giving predictable and reliable results from one application run to the next.

Superior return on investment—Features that increase ROI include a large number of I/O slots, toolless chassis design, and power supplies that enable in-box expandability of core components

Professional Graphics—Workstations are designed to support the most powerful graphics cards, a requirement for high-end applications where 3D or many 2D monitors are required.

Choosing the right workstation

Given the wide range of price and performance covered by the HP family of personal workstations, choosing the right workstation can be a challenge.







The enclosed tables help a prospective buyer determine the optimal workstation solution. The table on the following page has the following columns:

"Application Segment"—A general description of the kind of application into which the workstation will be deployed. It is generally sorted by decreasing need of performance and other features, and contains a brief description of the market.

"You generally need..."—A generalization of the top two or three most important requirements for this market segment (in priority order). This list assumes that a purchaser has to make some priority decisions based on budget.

"Choose the right workstation"—A visual indication of the first choice of workstation model to choose.

"...Choose your add-ons"—Answers the question "if I have a small amount (5-10% of the purchase price) of budget left, how is it best spent?" These items are in priority order, and generally describe the most effective add-ons to purchase given the primary workstation model and application segment.

	<h1>If your application segment is...</h1>	<h1>You generally need...</h1>
	<p>Oil & Gas: Oil and Gas applications range from commercial to highly technical. HP concentrates applications that deal with the discovery and production of oil and gas resources. Applications require large memory, high-end visualization, and high-end storage. Image courtesy of Landmark Graphics.</p>	<ul style="list-style-type: none"> • Large memory • Multiple large monitors • Multiple cores • Large storage capacity
	<p>High-end CAD and CAE: (UGS NX, Pro/ENGINEER, and CATIA). These applications often require large memory capacity, high-end and extreme 3D graphics, and elaborate RAID solutions. Image courtesy of Autodesk.</p>	<ul style="list-style-type: none"> • 3D graphics • Large memory • Large storage capacity • RAID
	<p>Electronic Design Automation (EDA): Electronic Design Automation describes a wide variety (and large number) of applications. About anything to do with designing electronic components, from structural analysis to electromagnetic radiation interference to chip design is considered "EDA."</p>	<ul style="list-style-type: none"> • Large memory • Low price • Performance • Multi-OS support
	<p>High-end DCC Video: (Autodesk Maya, 3ds Max, Avid SoftImage XSI). These customers often require high-end or extreme 3D graphics cards, dual processors, and very large memory capacities, although in some cases the entry-level systems fit well.</p>	<ul style="list-style-type: none"> • 3D graphics • Performance • Large memory • High storage capacity
	<p>Financial Services: Needs include a low-cost system, typically used in front office environments where power users, bankers and financial planners are using many applications and require multiple displays.</p>	<ul style="list-style-type: none"> • Multiple monitors • Low price • Performance
	<p>DCC Animation: Animation/Imaging (ToonBoom, Adobe Photoshop, Illustrator, Director, Flash, or Authorware). Users that are doing advanced image manipulation and 2D animation, as the features are well suited and the price is very affordable. Image courtesy of CraneDigital, LLC.</p>	<ul style="list-style-type: none"> • Multiple monitors • 2D graphics • Performance
	<p>Mid DCC Video: Animation/Imaging (ToonBoom, Adobe Photoshop, Illustrator, Director, Flash, or Authorware). An entry workstation is an excellent fit for all of these applications for users that are doing advanced image manipulation and 2D animation, as the features are well suited for the price. Image courtesy of Colin Levy, Peerless Productions.</p>	<ul style="list-style-type: none"> • Low price • 2D graphics • Performance • Large storage
	<p>Mid CAD: (UGS SolidEdge, SolidWorks, Autodesk Inventor, and Bentley MicroStation). In general, the entry workstation will be a great fit for those users that require mid-market CAD solutions but are price sensitive. Image courtesy of SolidWorks.</p>	<ul style="list-style-type: none"> • Low price • 2D/3D graphics • Medium memory
	<p>Entry DCC: (Adobe Photoshop, Illustrator, Director, Flash, or Authorware). An entry workstation is an excellent fit for all of these applications for users that are doing advanced image manipulation and 2D animation, as the features are well suited and the price is very affordable. Image courtesy of Cakewalk (a division of Twelve Tone Systems, Inc.)</p>	<ul style="list-style-type: none"> • Low price • 2D graphics • Performance
	<p>CAD—Entry: (Autodesk AutoCAD, AutoCAD LT, Architecture, and Mechanical Desktop; Educators, Students and Others). This is a "sweet spot" for entry-level workstations in the CAD space. It combines price sensitivity with the performance needed to run 2D and 3D entry level CAD. Image courtesy of Autodesk.</p>	<ul style="list-style-type: none"> • Low price • 2D/3D graphics • Performance
	<p>Power Office: Day-to-day users that perform complicated and data-intensive office functions. This includes graphics, video and web design, complex linked worksheet calculations, database storage/access and spreadsheet manipulations.</p>	<ul style="list-style-type: none"> • Low price • Performance • 2D/3D graphics
	<p>Software Development: High-end software development involves the manipulation of many files. Data accuracy and integrity for this type of work needs to be extremely high, and for this reason software developers need ECC memory.</p>	<ul style="list-style-type: none"> • ECC memory • Low price • Performance • Multi-OS support
	<p>Public Sector: Users in the Public Sector (government organizations including the military, educational institutions, and some healthcare and other not-for-profit organizations) have an extremely diverse set of application needs. Such organizations are quite cost-conscious; therefore price is generally important, although it depends on the application.</p>	<ul style="list-style-type: none"> • Low price • Stable lifecycle • ENERGY STAR® qualified • Reliability & Security

Choose the right workstation

...Then choose your add-ons



xw4550	xw4600	xw6600	xw8600	xw9400	
					<ol style="list-style-type: none"> 1) Add graphics/monitors 2) Add processor/cores 3) Add memory 4) More disk space
					<ol style="list-style-type: none"> 1) Add graphics/monitors 2) Add processor/cores 3) Add memory 4) Additional hard drives 5) Add an HP Space Pilot
					<ol style="list-style-type: none"> 1) Add memory 2) Upgrade to xw4600 3) Add processor/cores 4) Add memory
					<ol style="list-style-type: none"> 1) Higher performance graphics 2) Add processor/cores 3) Add memory 4) Increase disk space 5) Add an HP Space Pilot
					<ol style="list-style-type: none"> 1) Use xw6600 for traders 2) Add graphics/monitors 3) Add processor/cores 4) Select xw8600
					<ol style="list-style-type: none"> 1) Upgrade to xw4600 2) Add processor/cores 3) Add memory
					<ol style="list-style-type: none"> 1) Upgrade to xw4600 2) Additional hard drives 3) Add processor/cores 4) Add memory
					<ol style="list-style-type: none"> 1) Select xw6600 2) Add processor/cores 3) Add/upgrade graphics 4) Add memory 5) Add an HP Space Pilot
					<ol style="list-style-type: none"> 1) Upgrade to xw4600 2) Add processor/cores 3) Add memory
					<ol style="list-style-type: none"> 1) Upgrade to xw4600 2) Add memory 3) Add processor/cores
					<ol style="list-style-type: none"> 1) Upgrade to xw4600 2) Add processor/cores 3) Add memory 4) Additional display
					<ol style="list-style-type: none"> 1) Upgrade to xw4600 2) Add processor/cores 3) Add memory
					<p>Add-ons depend upon the application; refer to the particular application segment for additional information. (Note: also choose application segment on following page).</p>

Segment requirements at-a-glance



Oil & Gas
 >128 GB memory
 Multiple large monitors
Image Courtesy of Landmark Graphics



High-end CAD and CAE
 Dual 3D graphics
 64-bit OS
Image Courtesy of Autodesk



EDA
 32+ GB memory



High-end DCC Video
 Lots of high-speed storage,
 Maximum I/O



Financial Services
 16 GB memory,
 2D graphics, multiple (>4) monitors



DCC Animation
 4 I/O Slots,
 Performance I/O, high-end graphics
Image courtesy of CraneDigital, LLC



Mid DCC Video
 Dual CPU socket, 4-8 GB memory,
 3D graphics, Large monitor(s)
Image courtesy of Colin Levy, Peerless Productions



Mid CAD
 Midrange I/O, 3D graphics,
 Large monitor(s)
Image courtesy of SolidWorks



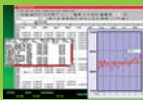
Entry DCC
 2-3 HDD,
 3 I/O Slots, Large monitor(s)
Image courtesy of Cakewalk (a division of Twelve Tone Systems, Inc.)



Entry CAD
 2 GB memory,
 Entry 3D graphics, medium monitor(s)
Image courtesy of Autodesk



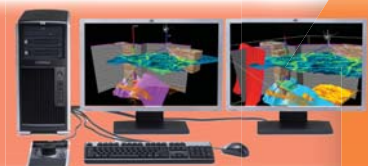
Power Office
 Single CPU socket,
 2 I/O Slots,
 Single 2D graphics



Software Development
 Single CPU socket,
 2 GB memory,
 Single 2D graphics



HP xw8600 Workstation
 • Dual-socket Intel® Xeon®
Screen image courtesy of Autodesk



HP xw9400 Workstation
 • Dual-socket AMD® Opteron™
Screen image courtesy of Landmark Graphics



HP xw6600 Workstation
 • Dual-socket Intel Xeon
Screen image courtesy of SolidWorks



HP xw4600 Workstation
 • Single socket Intel Core 2
Screen image Courtesy of Autodesk



HP xw4550 Workstation
 • Single socket AMD Opteron
Screen image Courtesy of Autodesk

Increasing Features/Performance

To learn more, visit www.hp.com/go/workstations,
www.hp.com/accessories/workstations

© Copyright 2008 Hewlett-Packard Development Company, L.P. The information contained herein is subject to change without notice. The only warranties for HP products and services are set forth in the express warranty statements accompanying such products and services. Nothing herein should be construed as constituting an additional warranty. HP shall not be liable for technical or editorial errors or omissions contained herein.

AMD and AMD Opteron are trademarks of Advanced Micro Devices, Inc. ENERGY STAR is a registered mark owned by the U.S. government. Intel, Xeon, and Core are registered trademarks of Intel Corporation or its subsidiaries in the United States and other countries. Microsoft and Windows are U.S. registered trademarks of Microsoft Corporation. Windows Vista is either a registered trademark or trademark of Microsoft Corporation in the United States and/or other countries.